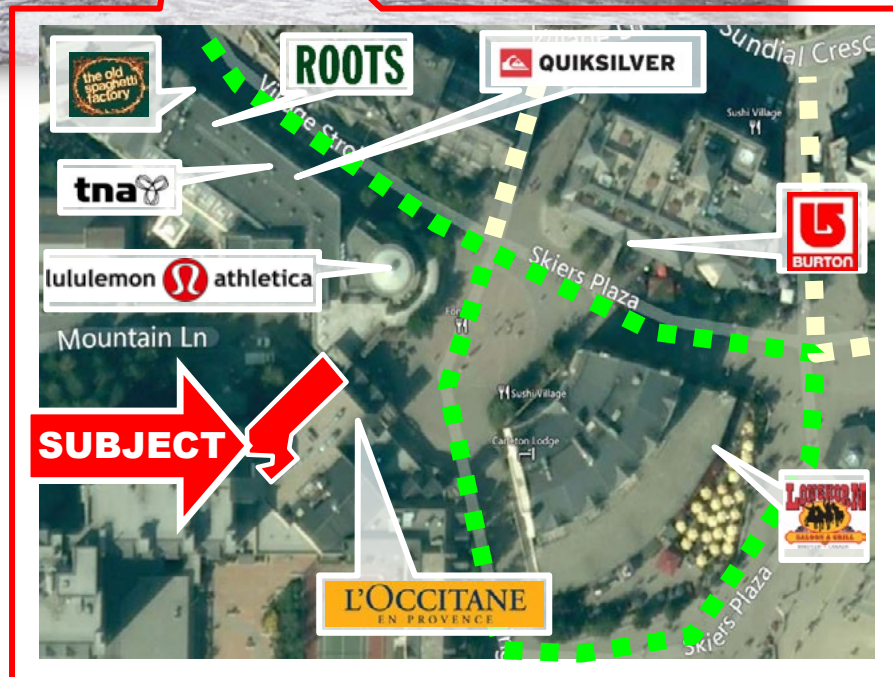
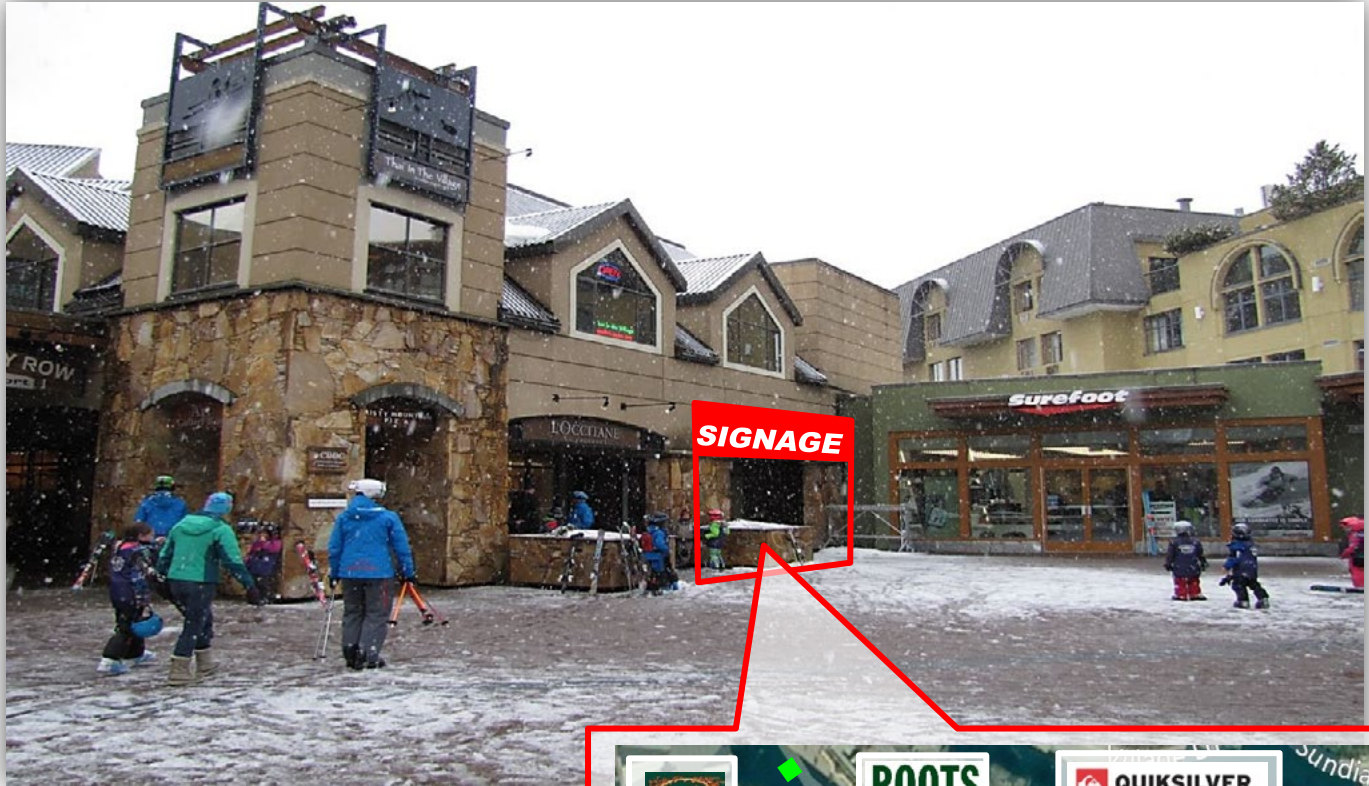


**REDUCED RATE!**

# FOR SUBLEASE

**202 – 4293 MOUNTAIN SQUARE, WHISTLER, BC**



- SIZE:** 3,073 SF
- OCCUPANCY:** Immediately
- CAM:** \$20.00 PSF (Est. 2014)
- TAX:** \$10.00 PSF (Est. 2014)
- RENTAL RATE:** Contact Leasing Agent

Rare high exposure retail space in the heart of Whistler Village, fronting onto Whistler's busiest pedestrian square. World class ski resort, ranked #1 in North America and recognized around the world.

**JOE ROGERS**  
 778.383.6537 DIRECT  
 604.209.0809 MOBILE  
 joe@srecanada.com

**STRATEGIC REAL ESTATE LTD.**  
 402 – 1001 W. Broadway  
 Vancouver, BC V6H 4B1  
 www.srecanada.com

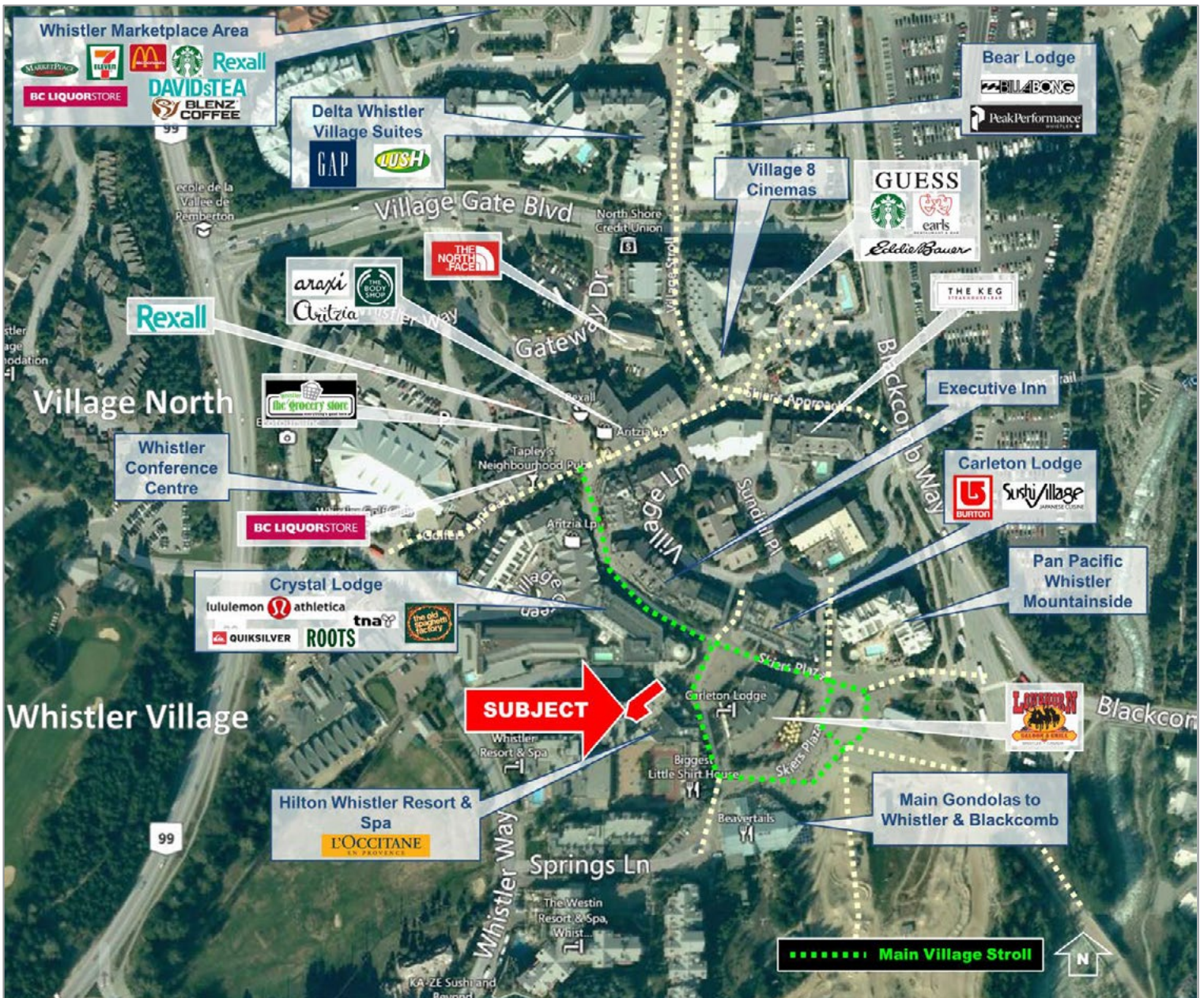


# FOR SUBLEASE

## 202 – 4293 MOUNTAIN SQUARE, WHISTLER, BC

### Overview

- Best available space in Whistler, located directly across from the Whistler Blackcomb gondolas generating the highest pedestrian traffic volumes.
- 2.1 million visitors annually: Whistler Blackcomb is a premier year-round resort with all season winter and summer activities.
- Average daytime population of 28,000 to 45,000 people daily.
- Subject Premises located in Mountain Square, a 39,000 SF multi-level shopping centre in the heart of the Whistler Village Retail Stroll.



# FOR SUBLEASE

**202 – 4293 MOUNTAIN SQUARE, WHISTLER, BC**

